

[Subscribe](#)[Past Issues](#)[Translate ▼](#)[View this email in your browser](#)

Minnesota Public Health Association

SPECIAL EDITION National Public Health Week (NPHW) 2020

April 6, 2020[Website](#)[Facebook](#)[Twitter](#)[Instagram](#)[LinkedIn](#)**IN THIS ISSUE**[Upcoming Committee Meetings](#)[Save the Date](#)[Job Corner](#)[National Public Health Week 2020](#)[Helpful COVID-19 Resources](#)[Update on MPHA events & COVID-19 Response](#)[APHA Update](#)[Legislative Priorities](#)[Highlight a Member!](#)[Got a Story For Us?!](#)**Upcoming Committee Meetings****Communications**

Meets the 2nd Wednesday of the month from 11:00 a.m. to 12:00 p.m. via teleconference.

National Public Health Week (NPHW) 2020

National Public Health Week April 6 - 12, 2020
NPHW @ 25: Looking Back, Moving Forward.

As the world responds to the COVID-19 pandemic, public health is at the forefront of everyone's minds. Now more than ever, it's important to celebrate our field.

This year is the 25th anniversary of NPHW, which means that this year is a celebration of the successes of public health's past and focusing on the future, looking toward what we all must do to make this the healthiest nation.

While we still plan to use our social media platforms to provide updates on the pandemic, we're also looking forward to celebrating National Public Health Week this upcoming week (April 6-12). Each day we'll provide content that corresponds with the NPHW Daily Themes put out by APHA (see below!). From MPHA member spotlights to blog posts to highlights of the work of public health groups across our state and more, we hope you follow along as we explore these areas of public health. Be sure to check out our website at <https://mpha.net/NPHW-2020> and our social media where we'll be posting throughout the week.

Monday: [Mental Health](#)- advocate for and promote emotional well-being

Tuesday: [Maternal and Child Health](#)- ensure the health of mothers and babies throughout the lifespan

Wednesday: [Violence Prevention](#)- reduce personal and community violence to improve health

Thursday: [Environmental Health](#)- help protect and maintain a healthy

[Subscribe](#)[Past Issues](#)[Translate ▼](#)

[i](#)
for more info.

Global Health

Meets the 3rd Thursday of the month from 5:30 to 7:00 p.m.

Please
contact globalhealth@mpha.net
for more info.

Health Equity

Meets the 3rd Thursday of the month from 5:30 to 7:30 p.m.

Please contact
healthequity@mpha.net for more
info.

Leadership Development

Please
contact leadership@mpha.net for
more info.

Membership

Meets the 3rd Wednesday of the month from 5:30 to 6:30 p.m.
Meetings are in person with a call-in option.

Please contact
membership@mpha.net for more
info.

Policy and Advocacy

Meets the 1st Wednesday of the month from 11:30 a.m. to 1:00 p.m.

Please
contact policy@mpha.net for more
info.

Save the Date

National Public Health Week (NPHW) 2020

April 6- April 12, 2020

Follow along with us on social
media this week!

NPHW Forum: "NPHW @ 25: The Future of Public Health is Now"

Monday, April 6, 1-3 p.m. ET

Saturday: [Healthy Housing](#)- ensure access to affordable and safe housing

Sunday: [Economics](#)- advocate for economic empowerment as the key to a healthy life

Some of our posts will be about how these themes intersect with the COVID-19 pandemic, but APHA also has a website with some ideas. Check out their [COVID-19 and the NPHW Daily Themes](#) page.

All of Us Research Program

We know that making the U.S. the healthiest nation can't be done in a week. That's why we're encouraging all of you to learn more and take part in the *All of Us* Research Program, a historic effort to collect and study data from one million or more people living in the United States. The goal of the program is better health for all of us. Learn more at <https://allofus.nih.gov/>.

Follow along with us on social media!



[@MNpubhealth](#)



[@MNPublicHealth](#)

Helpful COVID-19 Resources

Resources presented below are a subset of those on a document provided by the [Program in Health Disparities Research \(PHDR\)](#) at the University of Minnesota, which has information presented in a variety of formats and languages to inform individuals on how best to protect themselves, their families, and their communities. Sections include: Fact sheets & resources for communities; community organized mutual aid; employment, housing, and finances; food & utilities; families & education; emergency funds and grants; and other resources.

Information about COVID-19

- [Minnesota Department of Health](#)
 - [Additional Resources and Materials](#) (in 20 languages)
 - COVID-19 Hotline: 651-201-3920 or 1-800-657-3903 (7 am - 7 pm)
- [Center for Disease Control and Prevention](#)
 - [How to Prepare](#)
 - [Coping with Stress](#)
 - [COVID-19 Caretakers: Metal Health and Coping with Stress](#)
 - [Helping Children Cope with Emergencies](#)
- [World Health Organization](#)
 - [Q & A on Coronavirus](#)
- [UMN Center for Infectious Disease Research and Policy - COVID-19 Resource Center](#)

[Subscribe](#)[Past Issues](#)[Translate ▼](#)

this conversation about public health's strides in the last 25 years, the challenges of eliminating health disparities and the imperative to create a more just world. The National Public Health Week Forum is the national kickoff for NPHW.

Find out more about the Forum's featured speakers and panelists [here](#).

NPHW Twitter Chat

Wednesday, April 8 at 2 p.m. ET

APHA is hosting its tenth annual National Public Health Week Twitter Chat this week. We'll chat about all things public health, celebrate everything public health has accomplished and talk about where the movement is going. Make sure you follow @NPHW on Twitter and use #NPHWchat.

"How to Get Hired After Graduation!"

NPHW Student Day
Thursday, April 9 at 5 p.m. ET

For students about to graduate into an uncertain future, now's a great time to hear from early- and mid-career professionals and ask them "How'd you get that job?" Join APHA and students from Howard University at 5 p.m. ET on Thursday, April 9, for a live, interactive conversation: **"How to Get Hired After Graduation!"** [RSVP for the conversation here](#), and plan to watch the event on this page.

Job Corner

Customer Service Supervisor Hennepin Health

Closing: April 10, 2020 at 11:59 P.M.

Hennepin Health is seeking a Customer Service Supervisor to

- National Public Radio (NPR)
- [Just for Kids: A Comic Exploring The New Coronavirus](#)
- The National Child Traumatic Stress Network
- [Parent/Caregiver Guide to Helping Families Cope with COVID 19](#)
- [The Walk-In Counseling Center](#) provides 100% free professional counseling
- Scholastic is offering free online courses - [Learn at Home](#)
- TPT Twin Cities PBS
- [How to talk to you kids about coronavirus](#)
- [Performances](#)
- [Virtual Field Trips](#)
- [Virtual Museums](#)
- A Reading of ["A Map into the World"](#)
- [Ivy League courses you can take online right now for free](#)
- [TED-ED](#)
To the students, parents, and teachers affected by the COVID-19 pandemic: TED-Ed wants to support you by offering interactive, daily video lessons developed alongside expert educators from all over the world. Sign up here to get engaging lesson plans (for free!), delivered to your inbox every day.
- [Find low-cost Internet and affordable computers in your area](#) - for students
- [Walker virtual tour](#) (exhibition guides in English, Hmong, Spanish, Somali)
- [Lesson plans](#) for teachers at the bottom of the page (K-12)
- [American Academy of Pediatrics](#) - resources for parents with children of all age groups and children with special needs.

Time-Sensitive Resources

- [BCBS Foundation COVID-19 Responsive Grants 2020](#)
- Grant amount: \$5,000-\$25000
- Priority Areas:
 - Homelessness or housing insecurity exacerbated by the crisis
 - Anti-xenophobia and anti-bias efforts related to COVID-19
 - Support for people experiencing economic insecurity
 - Emergency food shelf and food delivery for vulnerable people

[Subscribe](#)[Past Issues](#)[Translate ▼](#)

policies and direction for the Customer Service team. This position will work in conjunction with the Hennepin Health Customer Service Leadership team. This individual must be able to lead, coach, motivate, and work towards providing differentiated service and support for Hennepin Health members/providers.

Find out more information [here](#).

Dental Assistant

NorthPoint Health & Wellness Center

Closing: April 20, 2020 at 11:59 P.M.

As a Dental Assistant with NorthPoint Health & Wellness Center, you'll work chair-side with one of our skilled general dentists as we deliver the best care possible for our patients. NorthPoint's dental clinic is one of the largest and highly regarded dental clinics in the area, providing quality care to both adults and children.

Find out more information [here](#).

Staff Nurse

Hennepin County Human Resources

Closing: Continuous

The Community Alternative Response Team (CART) is part of the Behavioral Health Area in Human Services and Public Health. CART is seeking a Staff Nurse to provide services to adults with serious and persistent mental illness (SPMI) and/or chemically dependent clients to maximize their ability to live as independently as possible in the community. The CART team provides short-term intensive case management services to clients who have had a petition for mental health commitment initiated. CART

○ Deadlines: 4/8/2020; 4/22/2020; and 5/6/2020

- MNSure open enrollment March 23, 2020 - April 21, 2020
- Apply online at <https://www.mnsure.org/>
- Office of the Vice President for Research Rapid Response Grant
- Funds available until they are expended or April 30, 2020.
[More Information](#) (local only)
- Office of Academic Clinical Affairs Rapid Response Grant
- Funds available until they are expended or April 30, 2020.
[More Information](#) (local only)

MPHA Events & COVID-19 Response

For the safety of our public health community, MPHA is postponing the following in-person events:

[March 20 Policy Forum](#) – postponed to November 2020

[April 7 NPHW Writing Event](#) – postponed, date TBD

[May 8 Policy Forum](#) - postponed to January 2021

[May 4-5 Annual Conference](#) – rescheduled to September 15-16, 2020

Please stay tuned for rescheduled date announcements in the near future. If you are unable to attend the new date, you will have the option of a refund of your registration fee or donating it to the scholarship fund.

MPHA will continue to monitor the outbreak of novel coronavirus (COVID-19) closely and follow guidance from the Minnesota Department of Health regarding our in-person events. We are also investigating alternative means of delivering our content.

We know this is a busy time and appreciate all that each one of you do to protect and promote good health of all Minnesotans.

Updates from APHA

APHA 2020 Annual Meeting (October 24-28, 2020) in San Francisco, California

2020 Theme — *Creating the Healthiest Nation: Preventing Violence*

[At this time, APHA states](#) that they are fully committed to holding the meeting in San Francisco, Oct. 24-28, as planned. They remain hopeful that this crisis will have abated with ample time to spare before APHA 2020. If we hear of any changes, we will be sure to update you.



APHA-Public Health Film Festival

Submission Deadline: Monday, May 11, 2020

APHA's Public Health Film Festival showcases animations, documentaries, narratives, shorts, public service announcements,

[Subscribe](#)[Past Issues](#)[Translate ▼](#)[back into community settings.](#)Find more information [here](#).[Click here to view job postings in our LinkedIn group](#)

disciplines or public health will be considered, films related to the APHA 2020 theme, “Creating the Healthiest Nation: Preventing Violence” are highly encouraged. The Film Festival screens films from around the world that explore and highlight public health locally, nationally, and globally. Festival organizers welcome **all** film submissions, including independent, community-created, and youth-created films. All submissions are peer-reviewed and scored before selection. All films must be 30 minutes or less.

To learn more or to submit a film/video, [click here](#).**Prepare for the CPH exam**

The “[Certified in Public Health Exam Review Guide](#)” will help prepare you for the Certified in Public Health exam administered by the National Board of Public Health Examiners. Addressing the most up-to-date public health tasks, this timely APHA Press book will help pave the way for your professional achievement in the field. APHA and Affiliate members get a [discount on the CPH exam](#), too.

**2019-2020 Legislative Priorities**

Each year, the [MPHA Policy & Advocacy Committee](#) chooses priorities based on MPHA member survey responses, current engagement in coalitions or other external groups, and political feasibility.

Our legislative priorities are a guide for the committee, and not meant to preclude action taken in support of other policies. Our current priorities include:

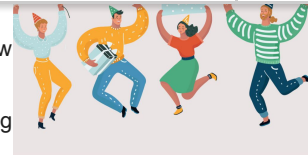
- Support efforts to **reduce health inequities**
- Support policies and programs that ensure **access to affordable health care**
- Support **public health funding**– including maintaining Statewide Health Improvement Partnership (SHIP) funding and increasing local public health grant funds
- Support policies that promote optimal **mental health**, including interconnected issues such as substance use and suicide
- Support **gun violence prevention** efforts
- Support **environmental health** efforts to ensure healthy families, clean water, clean air, and a healthy climate.

Kudos to MPHA membersWe want to celebrate **YOU!**

Let us know when you, or someone you know, reach exciting professional milestones. We want to highlight members who are presenting at

[Subscribe](#)[Past Issues](#)[Translate](#) ▼

when they get a promotion or have a work anniversary. Little or big, let us know about it! Send us a quick message on any of our social media platforms or using our [newsletter submission form](#) or by emailing us at communications@mpha.net.



We Want To Hear From You!

We'd love to hear from you about stories, events, or job postings that you think other MPHA members might be interested in. Use this [link](#) to fill out our submission form or email us at communications@mpha.net.

We look forward to hearing from you!



Copyright © 2019, Minnesota Public Health Association, All rights reserved.

Want to change how you receive these emails?
You can [update your preferences](#) or [unsubscribe from this list](#).

This email was sent to admin@mpha.net
[why did I get this?](#) [unsubscribe from this list](#) [update subscription preferences](#)
Minnesota Public Health Association · P.O. Box 14415 · Minneapolis, MN 55414 · USA

